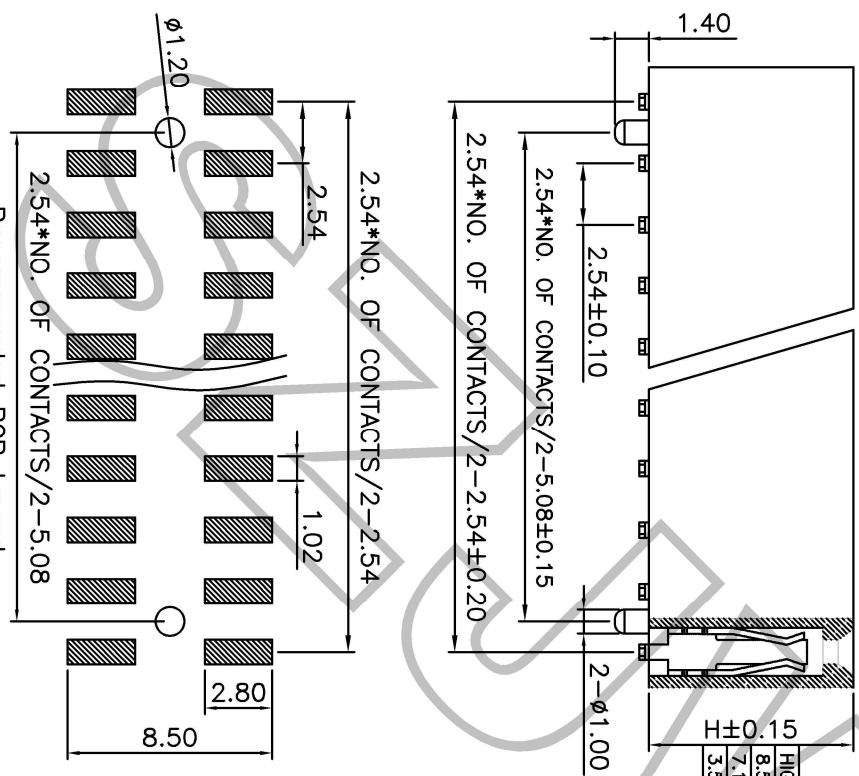
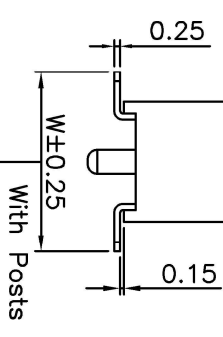
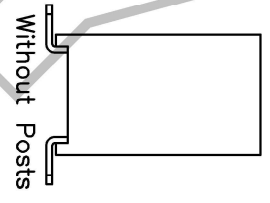


HIGH PART NO.
8.50 58U12-M
7.10 58U32-M
3.50 58U72-M



Recommended PCB Layout
Layout Tolerance ±0.05mm



W	7.50
	7.10
	7.30

1、SPECIFICATIONS:

Current Rating : 3.0 A
 Current Voltage : 250V AC/DC
 Contact Resistance : 20mΩ Max
 Insulation Resistance : 1000MΩ Min
 Withstand Voltage : 1000V AC/minute
 Operation Temperature : -40° C ~ +105° C

2、MATERIALS:

Contact Material : Copper Alloy
 Contact Plating : G/F or Tin over Ni
 Insulator Material : PA6T BK (UL94V-0)
 Max Processing Temp : 260±5° C for 5~10 Seconds

Ordering Informations

58U12 XX X N XX M R XX

- ①
- ②
- ③
- ④
- ⑤
- ⑥
- ⑦
- ⑧

- ① 58U12 Female Header 2.54 Dual Row Series U Type
- ② XX NO. of Contacts Per Row 02=2PIN 02~10P
- ③ X Insulator Material A=PA6T C=PA6T D=PA6T F=PC
- ④ N Post N=WITHOUT POSTS W=WITH POSTS
- ⑤ XX Contact Plated GF=Gold Flash G=1U" Gold SW=Tin Plated
- ⑥ M Mounting Type D=DIP R=Right Angle M=SNIT
- ⑦ R Packing T=Tube A=Tray R=TRAY/REEL
- ⑧ XX Serial NO. 01 01'99

苏州金维益电子科技有限公司
SUZHOU JINWEIYI ELECTRONICS & TECH CO.,LTD

品名规格 PART NO.	2.54_双排母座_2XnP_SMT_立贴_U_TYPE	
物料编码 MATERIAL NO.	58U12XXXXXXMRXX	制图 DRAWING
图号 DWG NO.	20230808001	审核 CHECKED
视图 PROJECTION	第三角	批准 APPROVED
客户料号		变更日期 DATE
CUSTOMER COPY		变更人 CHANGER
页码 SHEET	1 OF 1	

A1	210303001	刷新版面	21.03.03	Pop Zhong
A0				
版本 REV NO.	变更编号 ECN NO.	描述 DESCRIPTION	变更日期 DATE	变更人 CHANGER
1		2		3

F	2023.08.08	2023.08.08	MM
E			
D			
C			
B			
A			